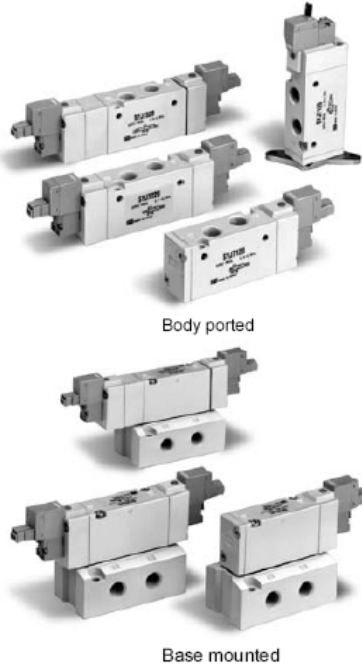


5 Port Solenoid Valve Rubber Seal Series SYJ7000



Model

Valve model	Configuration	Port size	Effective area mm ² (N/min)	Weight (g) ⁽²⁾		
				Grommet	L / M plug connector	
Body ported	2 position	Single	11 (588.90)	82	84	
		Double	11 (588.90)	92	96	
		3 position	Closed centre	8.5 (461.31)	102	106
			Exhaust centre	9 (460.75) [6.5 (353.34)]		
			Pressure centre	P-A, B: 13.5 (736.13) [7 (382.79)]		
				A, B-R1, R2: 7 (382.79)		
	3 position	Single	8.6 (471.12)	93	95	
		Double	8.6 (471.12)	103	107	
		3 position	Closed centre	7.1 (382.79)	113	117
			Exhaust centre	8.4 (461.31) [6.2 (337.1)]		
			Pressure centre	P-A, B: 7.7 (412.23) [5.5 (294.49)]		
				A, B-R1, R2: 7.1 (382.79)		
3 position	Single	9.9 (539.83)	93	95		
	Double	9.9 (539.83)	103	107		
	3 position	Closed centre	8.2 (451.49)	113	117	
		Exhaust centre	9.7 (530.01) [6.7 (368.16)]			
		Pressure centre	P-A, B: 9.3 (510.38) [6.6 (294.49)]			
			A, B-R1, R2: 7.6 (412.23)			
Base mounted	2 position	Single	12.6 (687.05)	162 (82)	164 (84)	
		Double	12.6 (687.05)	172 (92)	176 (96)	
		3 position	Closed centre	8.5 (446.131)	182 (102)	186 (106)
			Exhaust centre	9 (460.75) [6.5 (353.34)]		
			Pressure centre	P-A, B: 13.5 (736.13) [7 (382.79)]		
				A, B-R1, R2: 7 (382.79)		

Note 1) In case of M5 and mounted on manifold base.
Note 2) (): Without sub-plate.

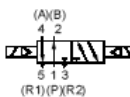
JIS Symbol

Body ported

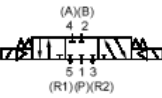
2 position single



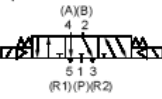
2 position double



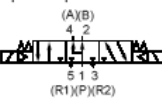
3 position closed centre



3 position exhaust centre

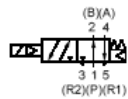


3 position pressure centre

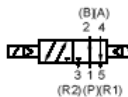


Base mounted

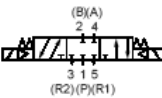
2 position single solenoid



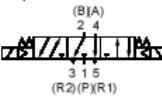
2 position double solenoid



3 position closed centre



3 position exhaust centre



3 position pressure centre



Specifications

Fluid	Air	
Operating pressure range (MPa)	2 position single	0.15 to 0.7
	2 position double	0.1 to 0.7
	3 position	0.15 to 0.7
Ambient and fluid temperature(°C)	Max.50	
Response time (ms) at 0.5MPa ⁽⁴⁾	2 position single, double	≤ 30
	3 position	≤ 60
Max.operating frequency (Hz)	2 position single, double	5
	3 position	3
Manual override	Non-locking push, Push-turn-locking slotted style	
Pilot exhaust	Individual pilot exhaust, Common exhaust (pilot and main valve)	
Lubrication	Not required	
Mounting orientation	Universal	
Impact/Vibration resistance (m/s ²) ⁽⁵⁾	150/30	
Protection structure	Dust proof	

Note 4) According to dynamic performance test JIS B8375-1981 (Coil temperature 20°C, at rated voltage, without surge voltage suppressor)
Note 5) Impact resistance: No malfunction resulted from the impact test using a drop impact tester. The test was performed on the axis and right angle direction of the main valve and armature, for both energized and de-energized states. (Value in the initial stage)
Vibration resistance: No malfunction occurred in a one-sweep test between 8.3 and 2000Hz. Test was performed at both energized and de-energized states to axis and right angle direction of the main valve and armature. (Value in the initial stage)

Solenoid Specifications

Electrical entry	Grommet (G)/(H), L plug connector (L), M plug connector (M)	
Coil rated voltage (V)	DC	24, 12, 6, 5, 3
Allowable voltage	± 10% rated voltage	
Power consumption (W) ⁽⁶⁾	0.5 (With light: 0.55)	
Surge voltage suppressor	DC	Diode
Indicator light	LED	

Note 6) At rated voltage

How to Order

Configuration

1	2 position single solenoid
2	2 position double solenoid
3	3 position closed centre
4	3 position exhaust centre
5	3 position pressure centre

Rated voltage

For DC

5	24V DC
6	12V DC
V	6V DC
S	5V DC
R	3V DC
9	(Less than 50 VDC)

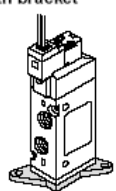
Light and surge voltage suppressor

—	Without light and surge suppressor
S	With surge suppressor
Z	With light and surge suppressor
U	With light and surge suppressor (Non-polar)

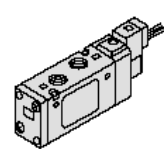
*"U" types are available for DC voltage valves.

Bracket

—: Without bracket
F: With bracket



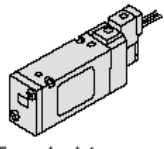
Note) Do not remove the factory installed bracket from models with the bracket option. Removal of the bracket will cause the valve to leak.



(For manifold type 20, 21)

Body ported SYJ7 **1** **2** **0** — **5** **M** — — — **01** — — — **-Q**

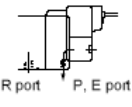
Base mounted SYJ7 **2** **4** **0** — **5** **M** — — — — — — — **-Q**



(For sub-plate, manifold type 40, 41, 42)

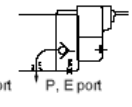
Body option

0: Individual exhaust for the pilot valve



R port P, E port

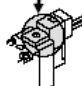
3: Common exhaust for the pilot and main valve



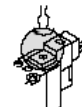
R port P, E port

Manual override

—: Non-locking push style

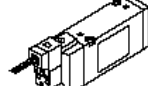


D: Push-turn-locking slotted style



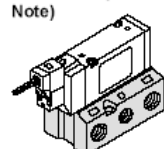
Port size

—: Without sub-plate

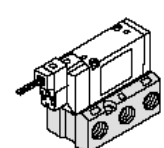


(With gasket and screws)

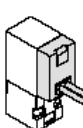
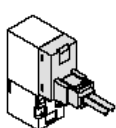
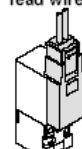
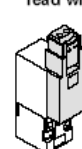
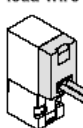
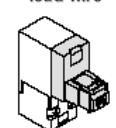
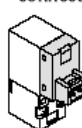
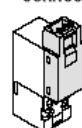
01: With 1/8 sub-plate (Note)



02: With 1/4 sub-plate



Electrical entry

24V, 12V, 6V, 5V, 3V DC			
Grommet	L plug connector	M plug connector	
G: 300mm lead wire	L: 300mm lead wire	M: 300mm lead wire	MN: Without lead wire
			
H: 600mm lead wire	LN: Without lead wire	LO: Without connector	MO: Without connector
			

Note) R1 and R2 port size 1/4

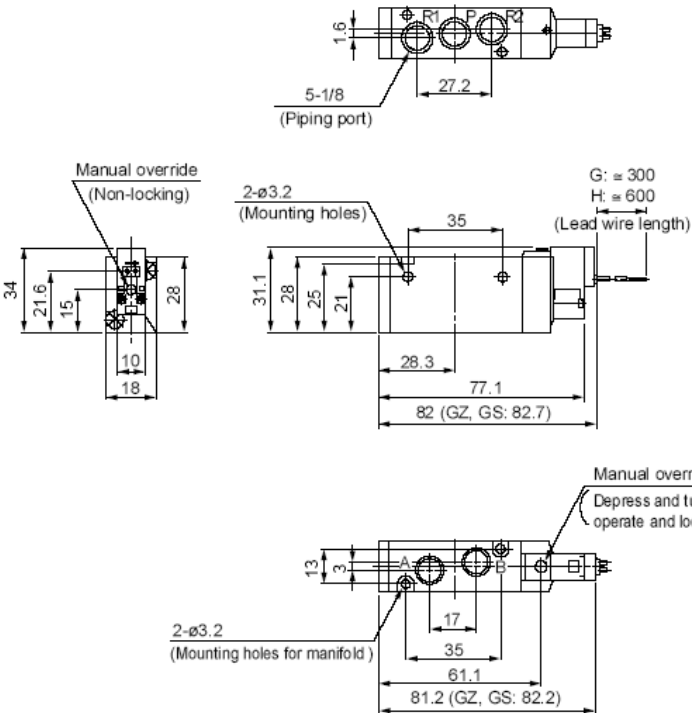
Protective class class III (Mark:)

Contact SMC for other voltages (9)

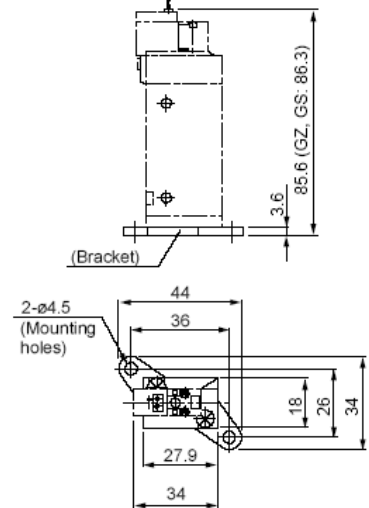
Series SYJ7000

2 Position Single

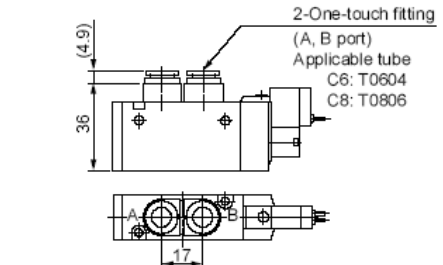
Grommet (G), (H): SYJ7120- □^G□□□-01□ -Q



With bracket

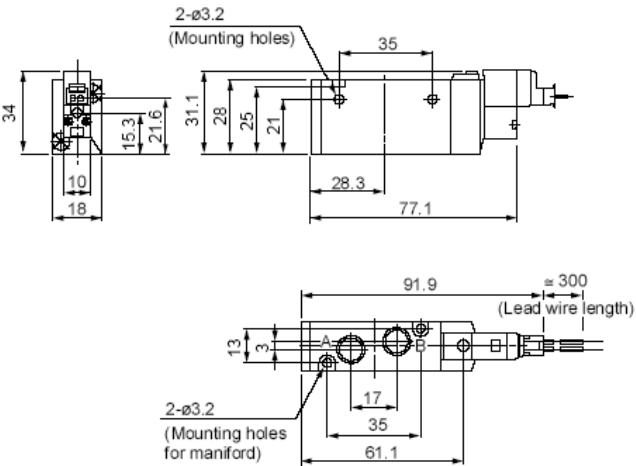


Built-in One-touch fitting:
SYJ7120- □^G□□□^{C6}□^{C8} -Q

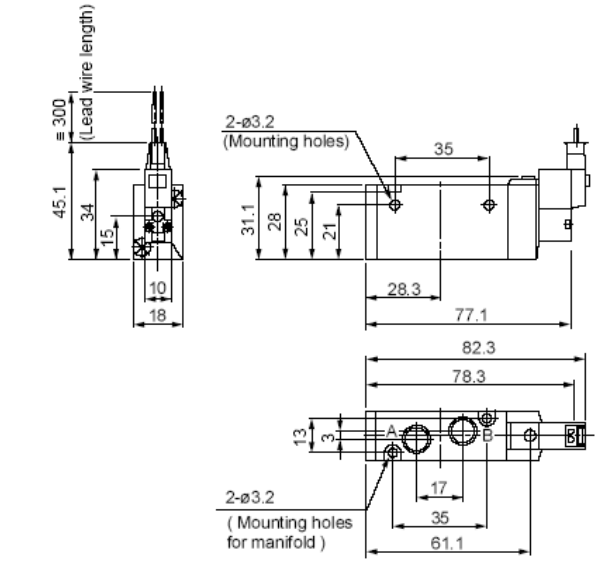


* Other dimensions are the same as the grommet style.

L plug connector(L): SYJ7120- □L□□□-01□ -Q



M plug connector (M): SYJ7120- □M□□□-01□ -Q



* Other dimensions are the same as the grommet style.

* Other dimensions are the same as the grommet style.

