

# Model 933 Solenoid Pinch Valve

Acro's Model 933 is a 2-way pneumatic pinch valve that is offered in either a normally-open (N/O) or normally-closed (N/C) default state. This model supports flexible tubing in the 0.250 – 0.375" ( $\frac{1}{4}$ – $\frac{3}{8}$ " ) outer diameter (OD) range and is designed with a snap-in tubing slot that enables easy tube loading and replacement. This model is ideally suited for bioprocessing applications where disposable tubing is used.

<b>Model #</b>	<b>933</b>
Weight	10 oz. (280g)
Operational Pressure Range	65–125 psig
Tube OD Range	0.250–0.375 in. (6.4–9.5 mm)
Supported Tube Hardness	Up to 70 Durometer Shore A
Mounting Options	Panel or Base
Protective Seals	Panel
Supplied Default State	N/O or N/C

Note: A control valve is required for operation with this model. See first bullet in accessories section for further details.



## Ideal Applications

- Bioprocessing: media, buffer, antibody, drug dispensing, or general biochemical fluid handling
- Medical Devices: surgical irrigation, dialysis, blood collection, plasma collection, IV and other medical based fluids
- Food and Beverage dispensing or transfer
- Industrial filling or dispensing systems
- Water purification, filtration and treatment systems

## Features

- Available in base or Panel mount configurations
- Snap-in tubing design for easy and quick loading and exchange
- Robust, simple design that supports long cycle life and accommodates larger diameter tubing
- Quiet and smooth operation with minimal heat generation in actuated states
- Splash seal for valve protection and enables easy cleaning without disassembly
- No wetted parts and zero dead volume

## Optional Accessories

- A 3- or 4-way control valve for pressure venting between states is required for operation, and can be supplied by Acro.
- Digital Hall sensor
- Microswitch
- Custom cabling, ties and harnessing

## Ordering and Customization

For ordering information please call 1.925.676.8828 or email us at: [info@acroassociates.com](mailto:info@acroassociates.com)

Need a custom pinch valve design? Acro is pleased to offer engineering design services to meet your custom needs. Some modifications often requested are changes to tube slot, pinch ridge, pinch gap, pinch force, occlusion time and alternate material construction.

# Engineering Diagram

## MECHANICAL

**RECOMMENDED TUBING RANGE:** .250 - .375 INCH O.D.  
(6.3 - 9.5 MM O.D.)

**STATE:** TUBING NORMALLY CLOSED OR NORMALLY OPEN, SPECIFY WHEN ORDERING.

**AIR REQUIREMENT:** 45 - 125 PSIG.

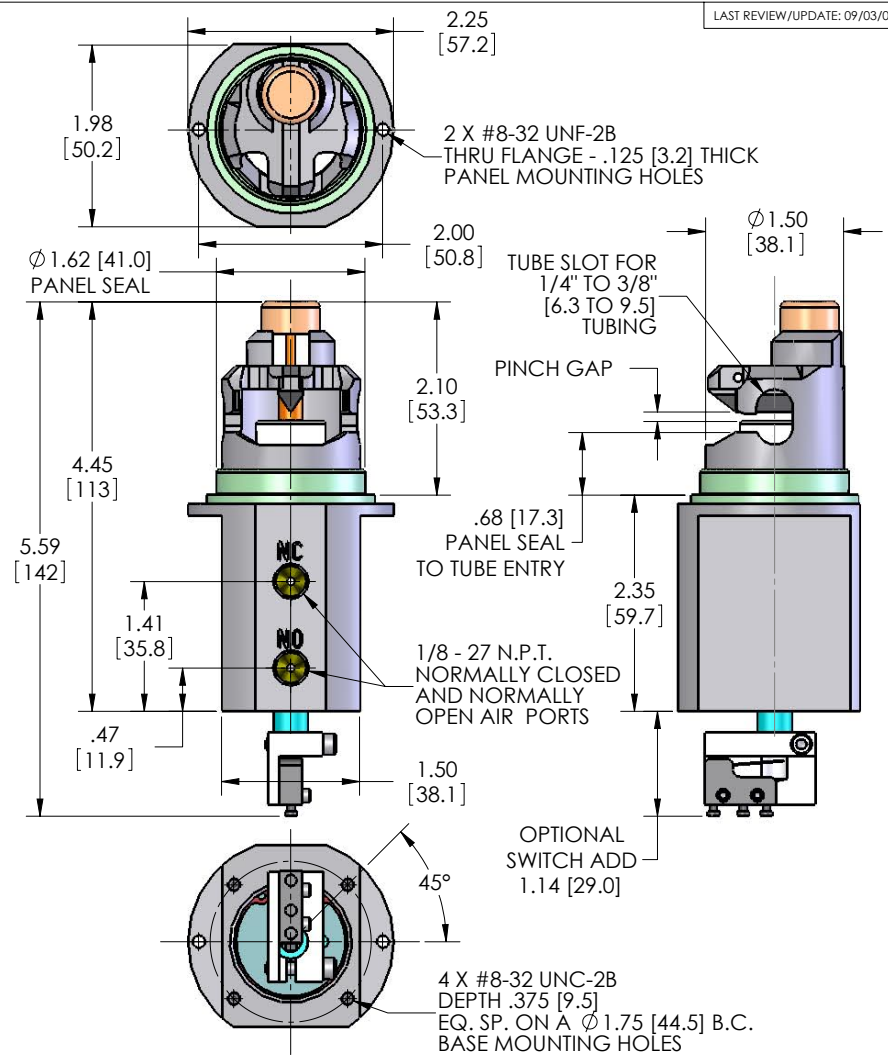
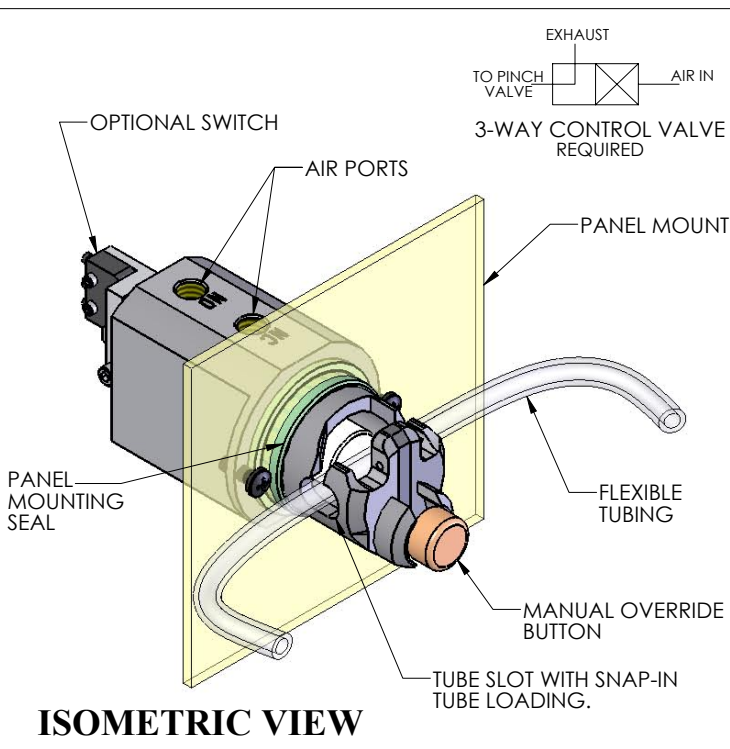
**SEALS:** PANEL MOUNTING SEAL STD.

**MOUNTING:** BASE OR PANEL MOUNT IN ANY POSITION.  
**TUBE LOADING:** SNAP-IN.

**POSITION SENSING:** OPTIONAL, CONSULT FACTORY.

**BODY MATERIAL:** HARD ANODIZED ALUMINUM.

## SPECIFICATIONS



LAST REVIEW/UPDATE: 09/03/09

DRAWING NUMBER  
**D9107**

DESCRIPTION  
**MODEL 933 PNEUMATIC PINCH VALVE GENERAL SPECS**

THIS DRAWING CONTAINS INFORMATION PROPRIETARY TO ACRO ASSOCIATES, INC.

**ACRO ASSOCIATES INC**  
CONCORD, CALIFORNIA



1990 Olivera Road, Suite A  
Concord, CA 94520-5455  
tel: 925-676-8828 • fax: 925-680-8113  
www.acroassociates.com