

Model 958 Solenoid Pinch Valve

Acro's **Model 958** is a 2-way solenoid pinch valve that is offered in a normally-closed (N/C) default state. This model supports flexible tubing in the 0.250 – 0.375" ($\frac{1}{4}$ – $\frac{3}{8}$ ") outer diameter (OD) range and is designed with snap-in tubing slot for easy tube loading and replacement. This model is ideal for medical or bioprocessing applications where disposable tubing sets or cassette/cartridges are being used.

Model #	958
Weight	22 oz. (640 g)
Required Power	7–70 Watts pull-in (Pulse) 4–7 Watts hold-in
Tube OD Range	0.250–0.375 in. (6.4–9.5 mm)
Supported Tube Hardness	Up to 70 Durometer Shore A
Mounting Options	Panel
Protective Seals	Splash and Panel
Manual Override	Included
Supplied Default State	N/C



Ideal Applications

- Medical devices: surgical irrigation, dialysis, blood and plasma collection, IV and other medical based fluids
- Bioprocessing: media, buffer, antibody, drug dispensing and general biochemical fluid handling
- Food and beverage dispensing or transfer
- Industrial filling or dispensing systems
- Water purification, filtration and treatment systems

Features

- Panel mount configuration
- Snap-In tube design for easy and quick loading and exchange
- Robust, simple design that supports long cycle life and accommodates larger diameter tubing
- Quiet and smooth operation with minimal heat generation in actuated states
- Splash seals for valve protection enable easy cleaning without disassembly
- No wetted parts and zero dead volume

Optional Solenoid Valve Accessories

- Solenoid *Pulse and Hold* driver/controller board
- Noise reduction module
- Digital Hall or analog sensors options
- Microswitch trigger
- Custom cabling, ties and harnessing

Ordering and Customization

For ordering information please call 1.925.676.8828 or email us at: info@acroassociates.com

Need a custom pinch valve design? Acro is pleased to offer engineering design services to meet your custom needs. Some modifications often requested are changes to tube slot, pinch ridge, pinch gap, pinch force, occlusion time and alternate material construction.

Engineering Diagram

MECHANICAL

RECOMMENDED TUBING RANGE: .250 - .375 INCH O.D.
[6.3 - 9.5 MM O.D.]

STATE: TUBING NORMALLY CLOSED.

SEALS: INTERNAL & PANEL MOUNT SPLASH SEALS STD.

MOUNTING: PANEL MOUNT IN ANY POSITION.

TUBE LOADING: SNAP-IN.

NOISE REDUCTION: OPTIONAL, CONSULT FACTORY.

ELECTRICAL

VOLTAGE REQUIREMENT: 12 - 48 VDC.

POWER CONSUMPTION:

PULL-IN POWER (PULSE): 7 - 70 WATTS

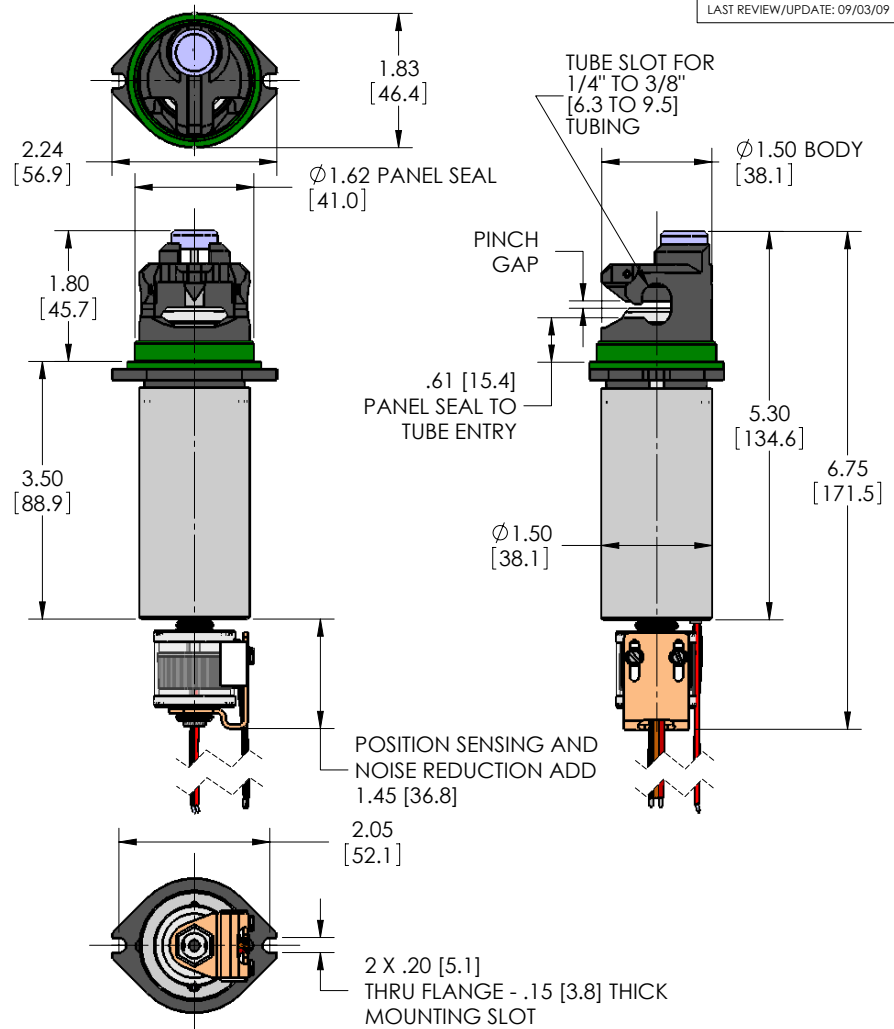
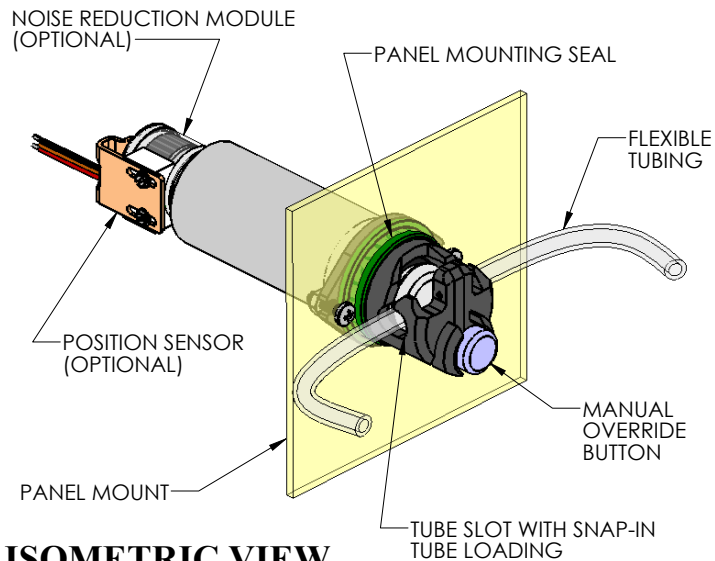
HOLD-IN POWER: 4 - 7 WATTS

ACTUATION: PULSE & HOLD CONTROLLER RECOMMENDED.

POSITION SENSING: OPTIONAL, CONSULT FACTORY.

LEADWIRES: 22 AWG UL1061, 12" LENGTH.

SPECIFICATIONS



DRAWING NUMBER
D9050

DESCRIPTION
**MODEL 958 SOLENOID
PINCH VALVE GENERAL SPECS**

THIS DRAWING CONTAINS
INFORMATION PROPRIETARY
TO ACRO ASSOCIATES, INC.

ACRO ASSOCIATES INC
CONCORD, CALIFORNIA



1990 Olivera Road, Suite A
Concord, CA 94520-5455
tel: 925-676-8828 • fax: 925-680-8113
www.acroassociates.com